

BALMESIANA'S PALACE

Barcelona



APORTANDO:

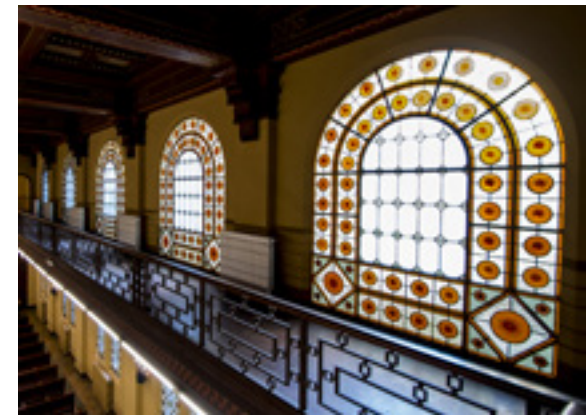
ESQUIZOFRENIA

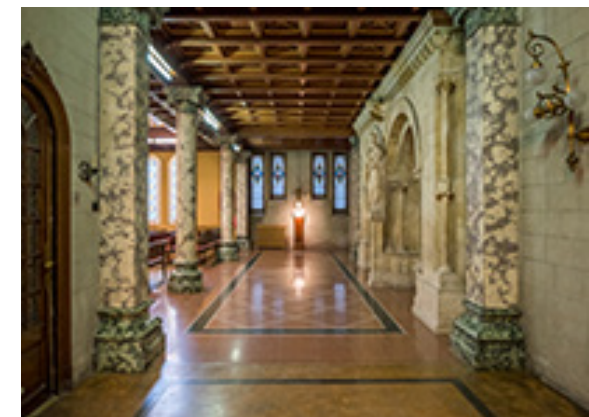
Welcome to the Balmesiana's Palace.

The Balmesiana's Palace, located to the city center of Barcelona, stands in an admirable Building of 1923 of modern construction but at the same time majestic medieval aspect, formed by institutions dedicated to the promotion of piety and the ecclesiastical liturgy.

The imposing entrance courtyard connects with the Chapel, that is a masterpiece done by the architect Rubió I Bellver, where we can find artworks created by the iconic modernist artist Josep Llimona. Come and discover the history and heritage of this institution.

The wide variety of rooms can accommodate corporate events of different nature, excellence and uniqueness as premier reference: presentations, breakfast and dinners, conferences, commercials, fashion shows, recordings, weddings, press conferences, etc.







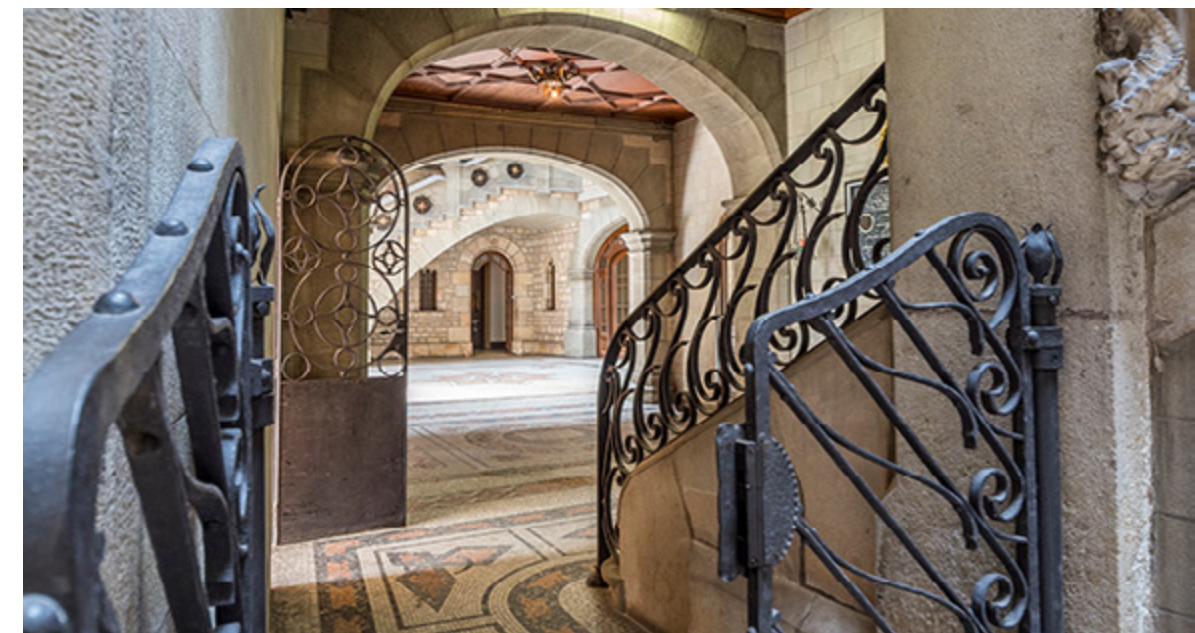
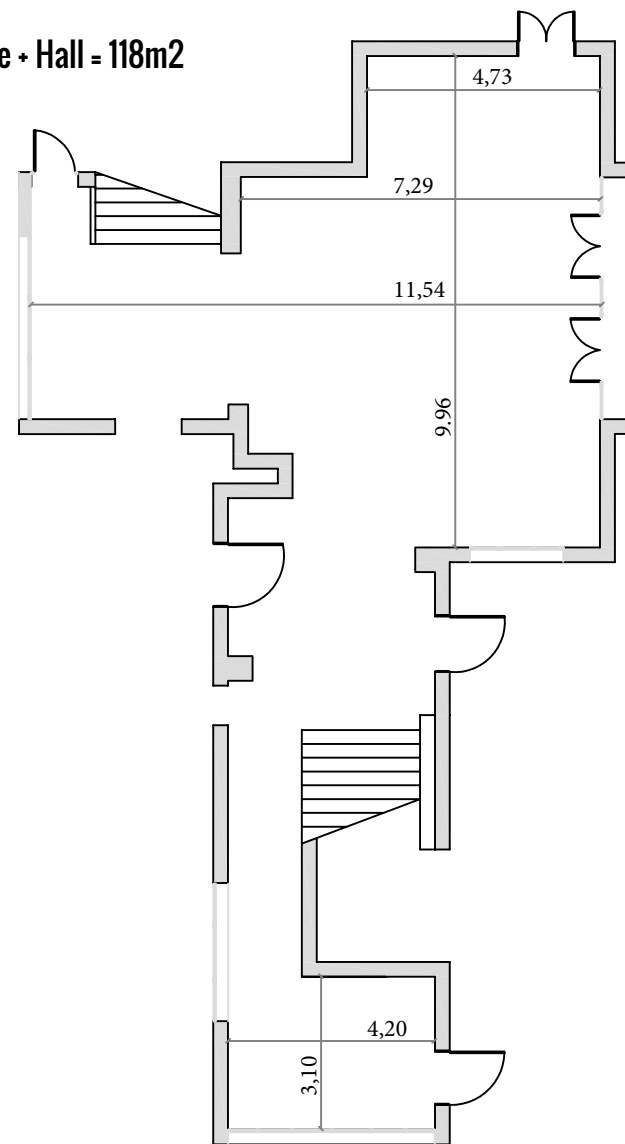


Entrance + Hall
Ideal space for cocktails

Capacity

m ²	Surface	118
	Cocktail	150 pax
	Banquet	110 pax

Entrance + Hall = 118m²



Auditorium

The auditorium offers

- RAC mobile PA
- Projector + projection screen
- Wireless microphone
- Interior lighting

Capacity



Surface

282,23



Cocktail

-



Banquet

-



Meeting

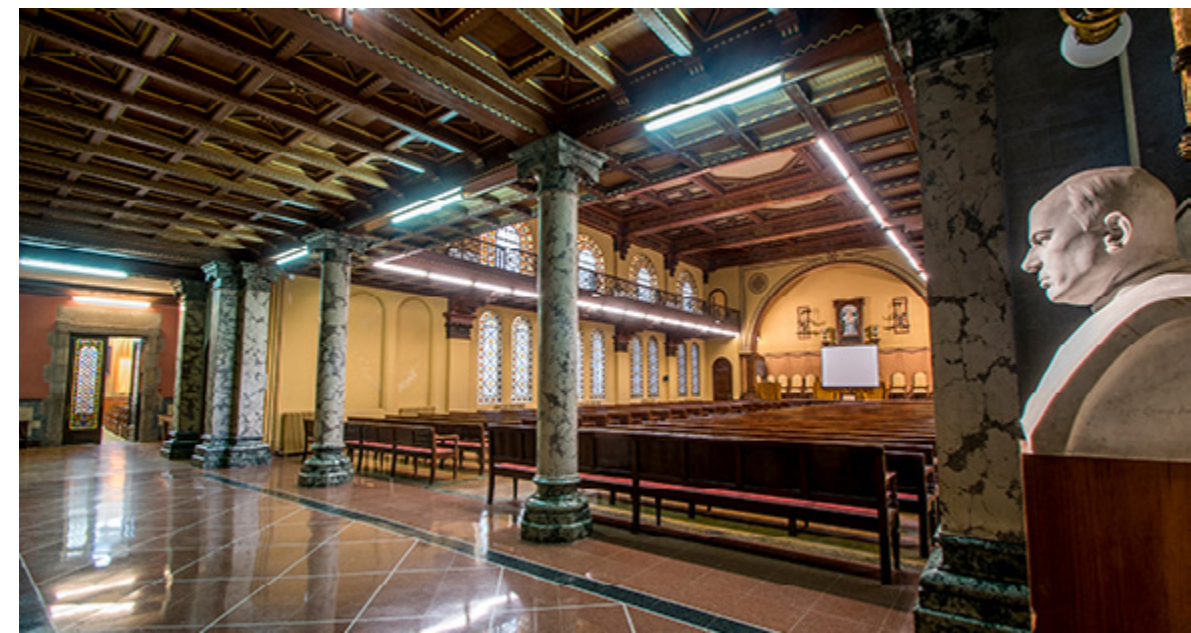
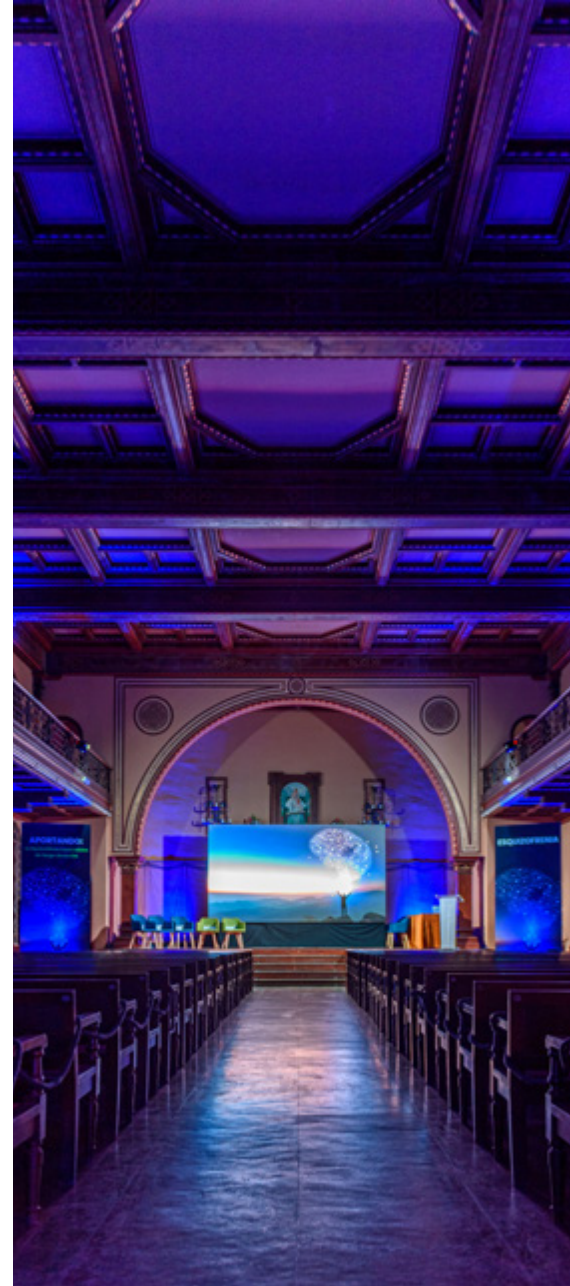
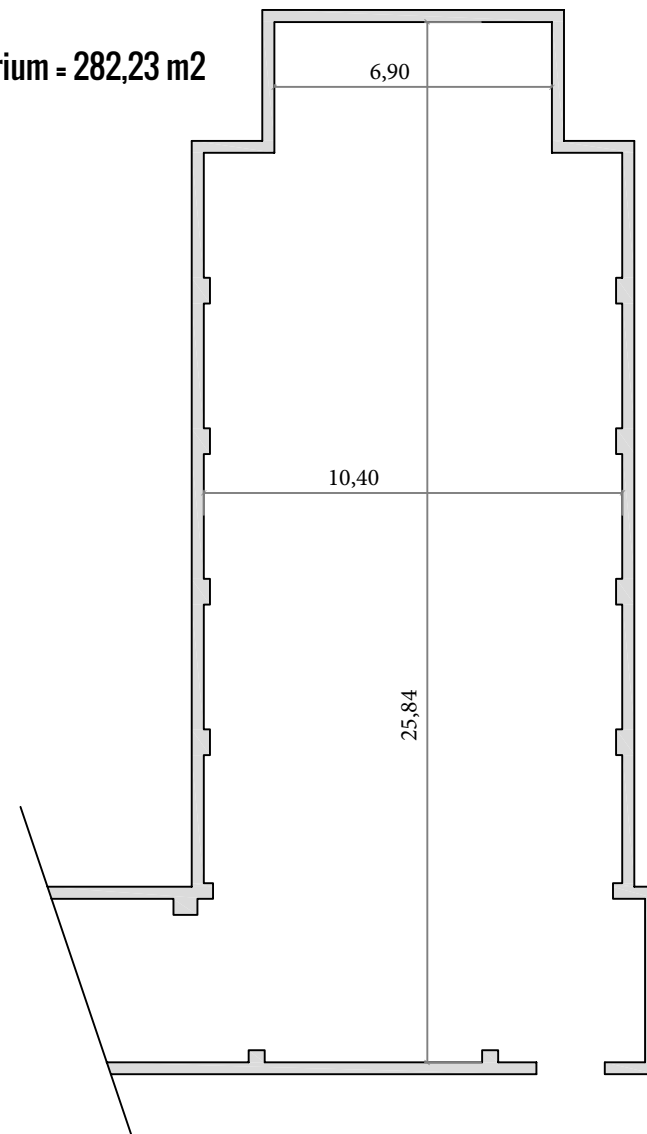
-



Auditorium

320 pax





Auditorium - 282,23 m2



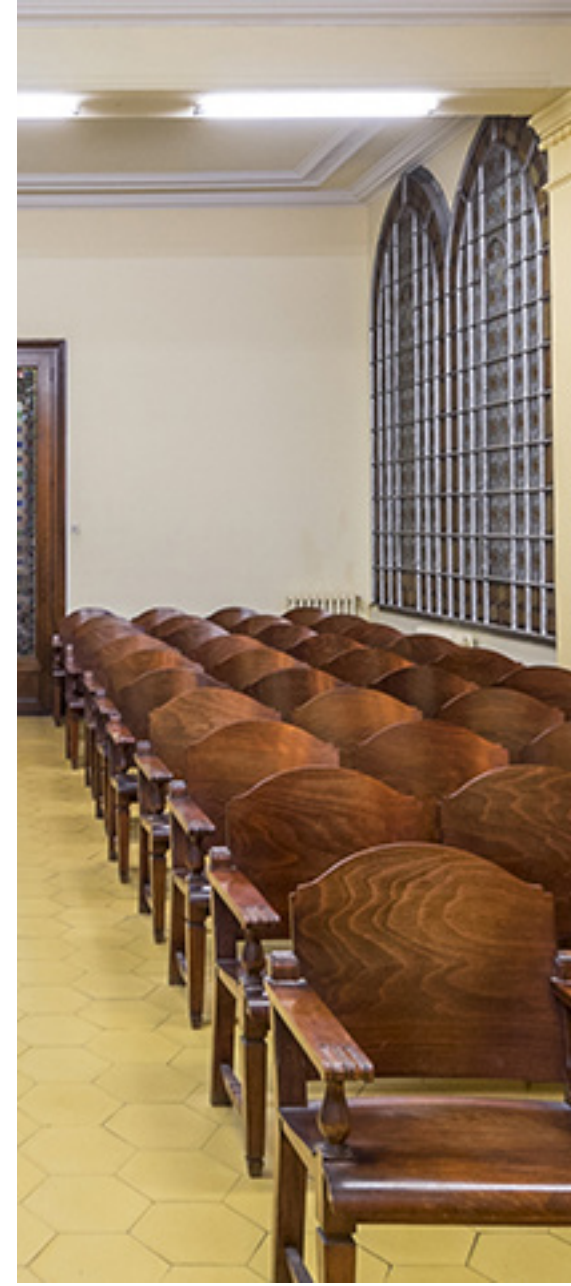
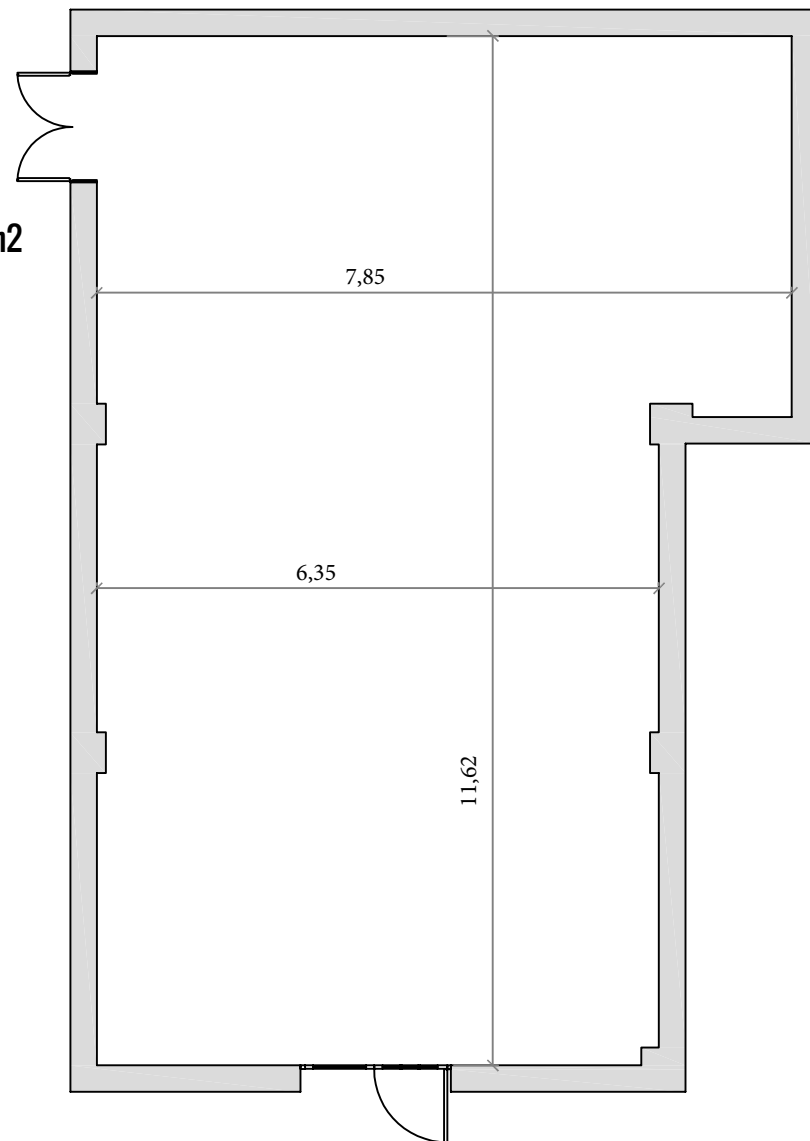
Meeting roomt

- RAC mobile PA
- Projector + projection screen
- Wireless microphone

Capacity

m ²	Surface	80
	Cocktail	-
	Banquet	-
	Meeting	80 pax
	Auditorium	-

Meeting room = 80 m2



Location

Balmesiana Foundation
Carrer de Duran i Bas, 9, 08002 Barcelona

GPS coordinates

Latitude: 41.385636

Lenght: 2.174541

The Balmesiana Foundation is located in the center of Barcelona, 5 minutes walking from Las Ramblas and 5 minutes from the cathedral of Barcelona.

How to get there?



Public Transport

1- Subway: **M** **L3** Plaça Catalunya / **L4** Jaume I

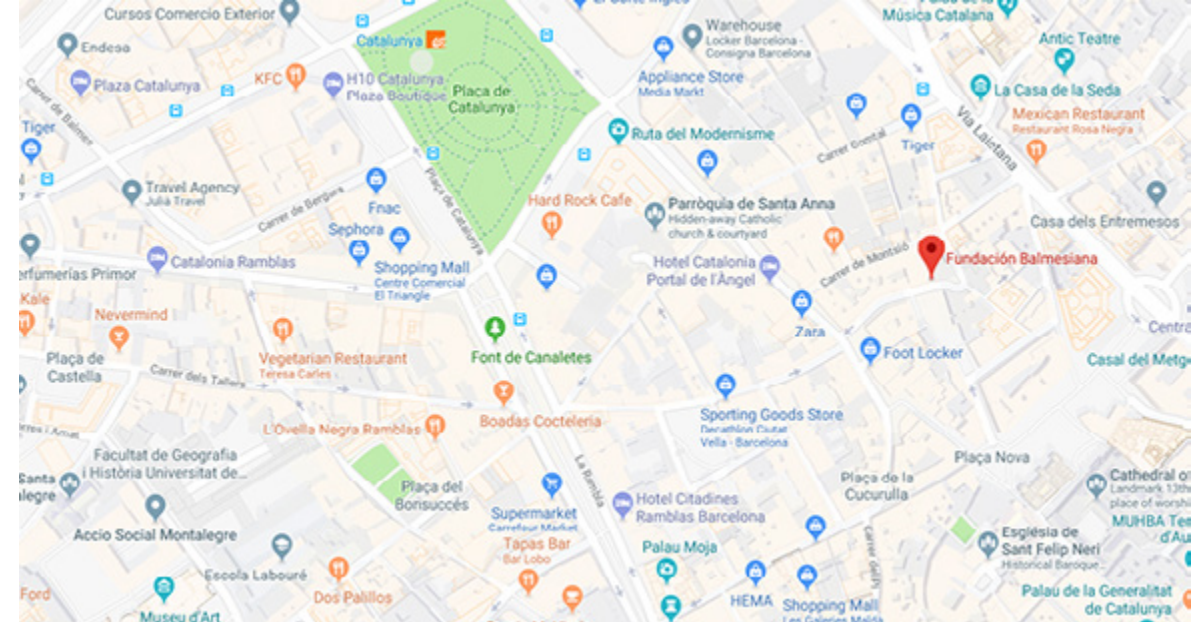
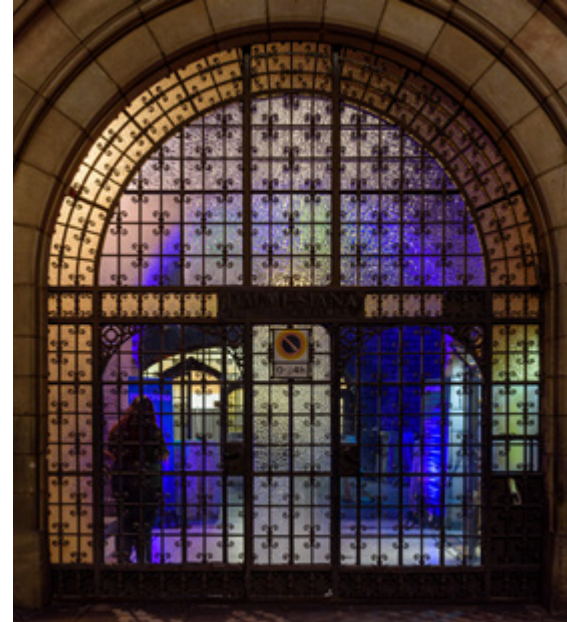
2- Bus: nº 45, nº 120



Privat Transport

1- From Via Laietana park in the Cathedral parking area or the St. Caterina's market parking area.

2- Looking for others parkings in the zone.





Sternalia Productions S.L.

C/ Torre dels Pardals, 33, local 3

08041 Barcelona (Catalonia /Spain)

Tel. 93 170 17 97

info@sternalia.com

www.sternalia.com