

The image shows the exterior of the Requesens Palace in Barcelona at night. The building is constructed from rough-hewn stone blocks. A prominent feature is a large, arched entrance with a black metal gate. To the right, a set of stone steps leads up to a smaller arched doorway, also with a metal gate. The steps are illuminated by small, warm-toned candles. Several colorful, patterned banners are draped over the stone walls. In the foreground, there are tables covered with black cloths, and a few people are visible inside the main archway. The overall atmosphere is historic and elegant.

REQUESENS PALACE

Barcelona

Welcome to the Requesens Palace

The Requesens Palace of Barcelona is listed as a Cultural Asset of National Interest. Located near the Church of St. Just, in the Gothic district, it used to be the largest residential building in the city during medieval times. It belonged to the Requesens family, one of the most important Catalan nobility.

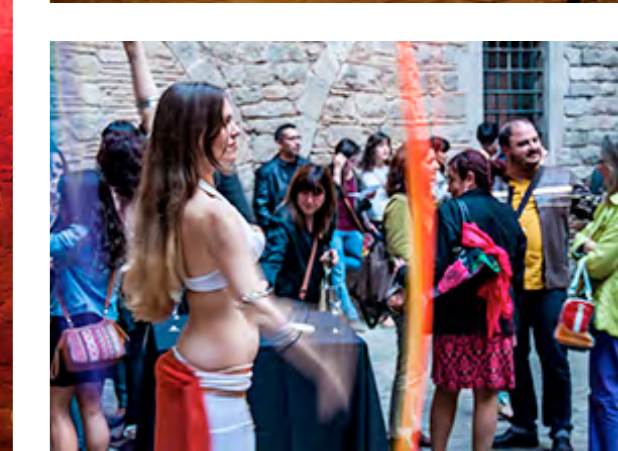
The original construction from the 13th century was built in the wake of the Roman wall from the 3rd century, using one of the towers. The current building comes from a reform and expansion in the 15th century, when it became property of Galcerà Requesens.

From the 13th century original's construction, the Gothic structure has been preserved as well as the mullioned windows. The palace is built around a large courtyard with open staircase that leads to the main floor. The last major restoration of the completed in 1970.

Since 1917 is the headquarters of the Royal Academy of fine arts, an institution that promotes knowledge of history and literature.

The wide variety of rooms can accommodate corporate events of different nature, excellence and uniqueness as premier reference: presentations, breakfast and dinners, conferences, commercials, fashion shows, recordings, weddings, press conferences, etc.









TINELLET ROOM AND COURTYARD.

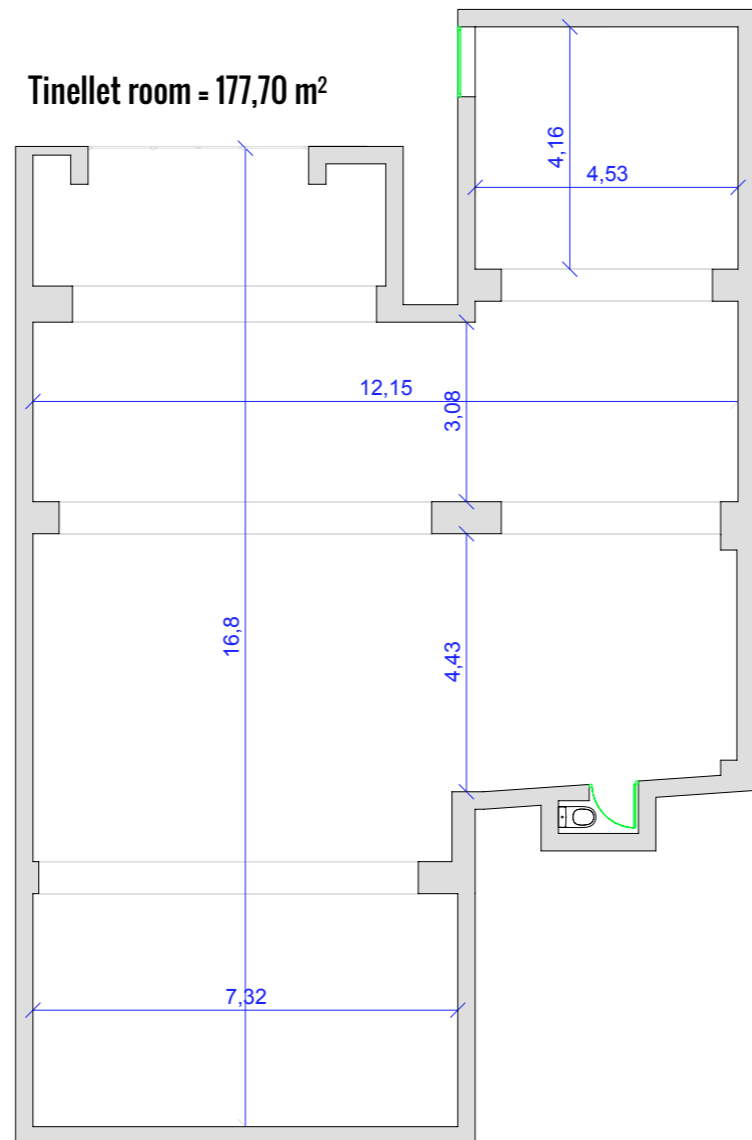
the Tinellet room and the courtyard offers.

- RAC mobile PA
- Projector + projection screen
- Wireless microphone
- Outdoor lighting in the patio
- Interior lighting in the room Tinellet

Capacity

	Surface	282,23
	Cocktail	300 pax
	Banquet	180 pax
	Meeting	120 pax

Tinellet room = 177,70 m²



TINELLET ROOM AND COURTYARD.

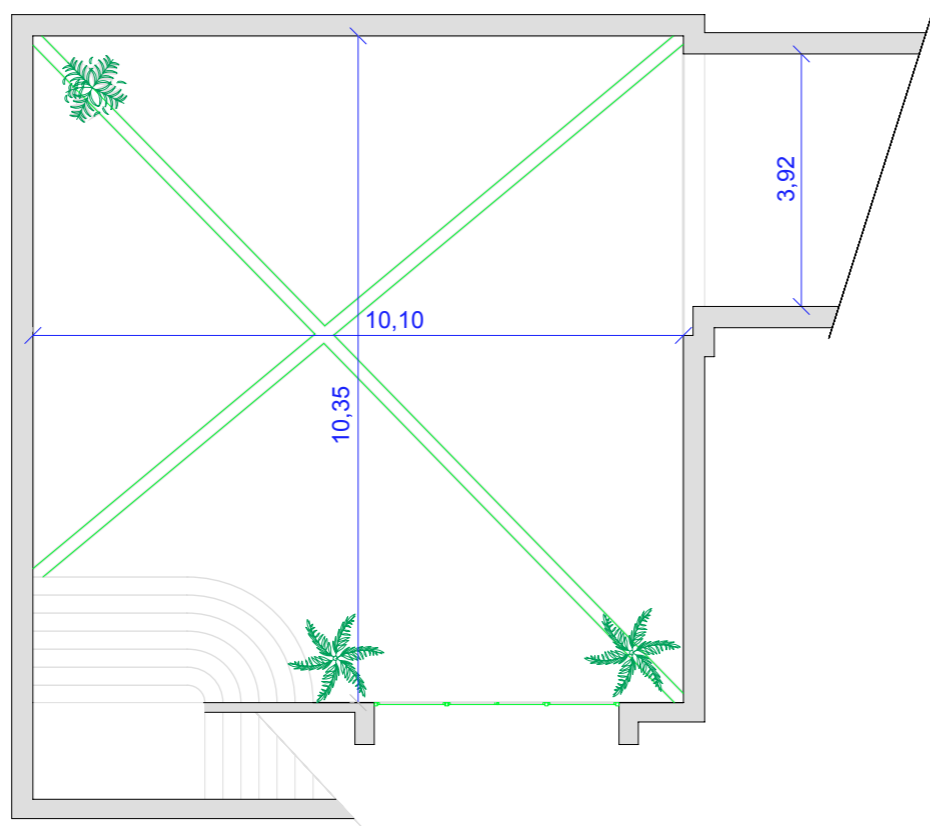
the Tinellet room and the courtyard offers.

- RAC mobile PA
- Projector + projection screen
- Wireless microphone
- Outdoor lighting in the patio
- Interior lighting in the room Tinellet

Capacity

	Surface	282,23
	Cocktail	300 pax
	Banquet	180 pax
	Meeting	120 pax

Courtyard = 104,53 m²



Auditorium

Space inside the Requesense palace for presentations, projections, conferences, etc.

- Projector + projection screen
- Wireless microphone

Capacity



Auditorium

130 pax



Location

Requesens Palace
Royal Academy of Fine Arts
c/ Bisbe Cassador, 3 (Sant Just plaza)
08002 Barcelona

GPS coordinates
41.383169, 2.178894

Located at the center of Barcelona, 5 minuts walking from
The Ramblas, and 5 minues away from the Cathedral of
Barcelona

How to get there?



Public Transport

1- Subway: **M** L3 Liceu / L4 Jaume I



2- Bus: nº 17, nº 45



Private Transport

1- From Via Laietana park in the Cathedral parking area or the St. Caterina's market parking area.
2- Looking for others parkings in the zone.



Plaza Sant Just



C/ Bisbe Cassador





Sternalia Productions S.L.
C/ Torre dels Pardals, 33, local 3
08041 Barcelona (Espanya)
Tel. 93 170 17 97
info@sternalia.com
www.sternalia.com