

An aerial photograph of Barcelona, Spain, showing a dense urban landscape with numerous buildings and streets. In the foreground, the Fabra Observatory is visible, a large, yellow, domed building situated on a hillside. The city extends to the coast, where the sea and some modern skyscrapers are visible in the distance. The text 'FABRA OBSERVATORY' and 'Barcelona' is overlaid in large, bold, black letters across the center of the image.

FABRA OBSERVATORY

Barcelona

Fabra Observatory, Barcelona

Welcome to the Fabra Observatory of Barcelona

Fabra Observatory, located in Tibidabo mountain, is a unique and emblematic space in the city, from its beginnings, it works around three areas: Astronomy, Meteorology and Seismology.

The Astronomical area is dedicated to little planets and comets astrometry within the framework of international programs.

The Meteorological area studies in detail the local climatology. The Seismic area intervenes in the world seismology, but particularly in the regional seismicity.

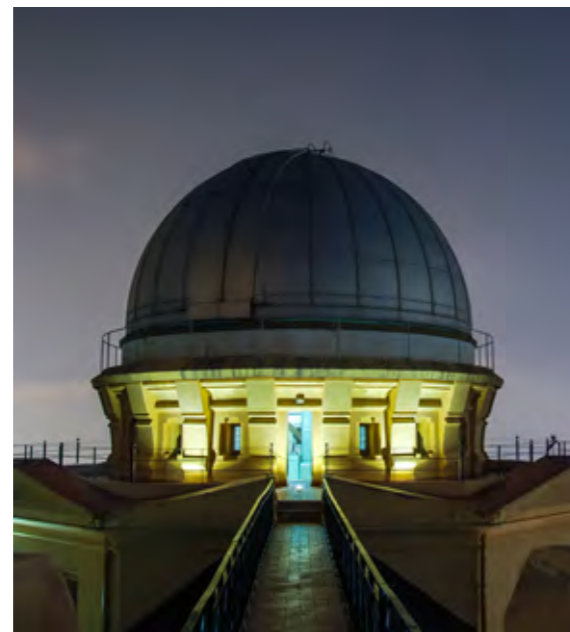
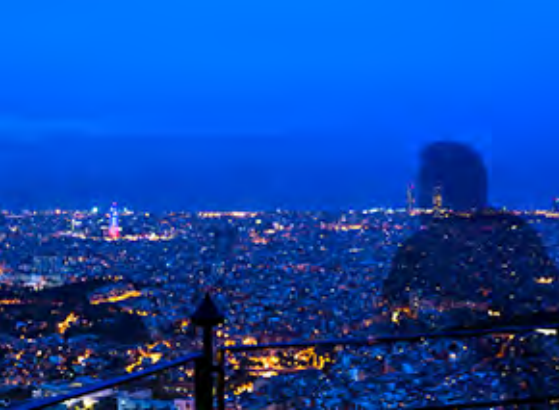
The Fabra Observatory belongs to the Royal Academy of Sciences and Arts of Barcelona (RACAB). Built thanks to a legacy of Mr. Camil Fabra Fontails, first Marquis of Alella, and inaugurated by King Alfonso XIII in 1904. The building was designed by the modernist architect Josep Domènech and Estepà.

The Fabra Observatory is the fourth most antique that is still active.

The wide variety of rooms can accommodate corporate events of different nature, excellence and uniqueness as premier reference: presentations, breakfast and dinners, conferences, commercials, fashion shows, recordings, weddings, press conferences, etc.









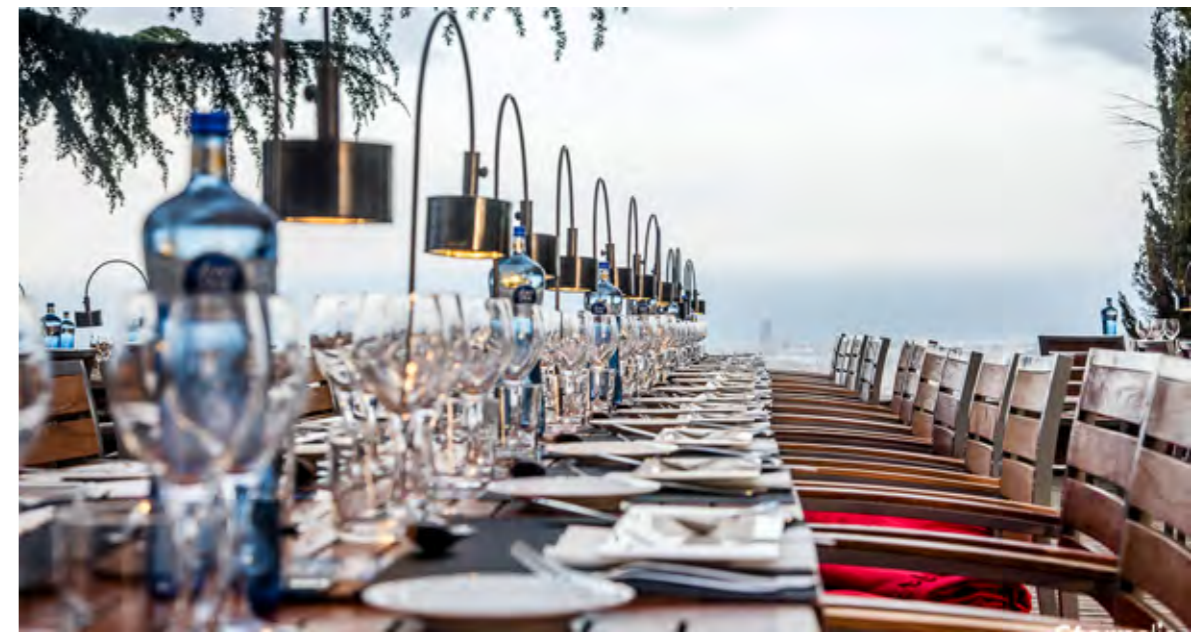
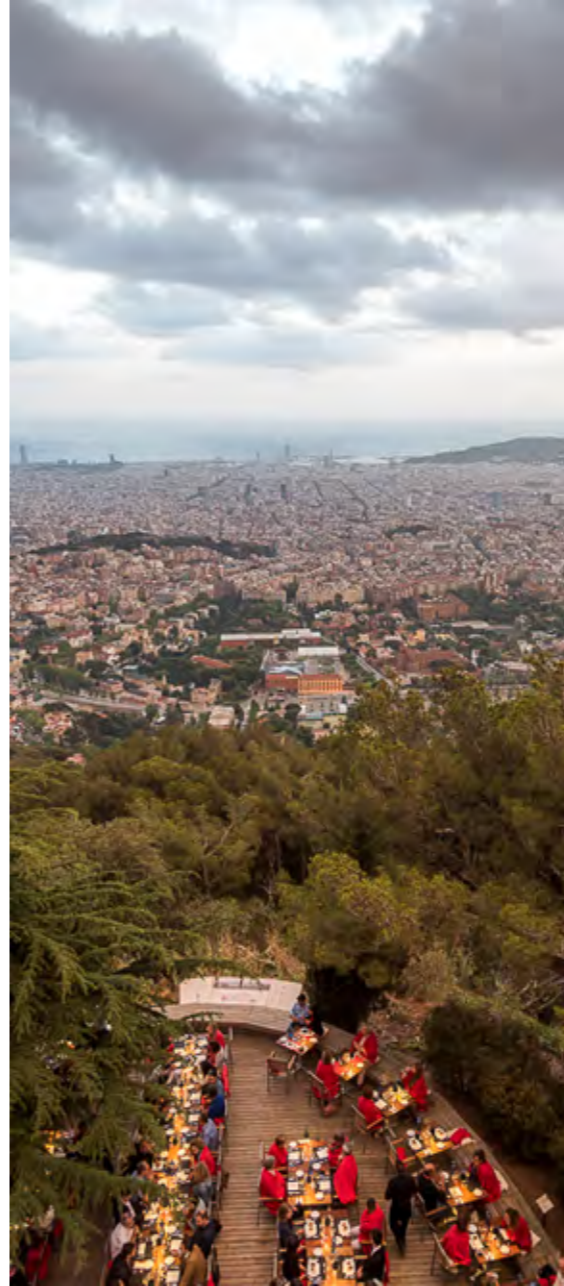
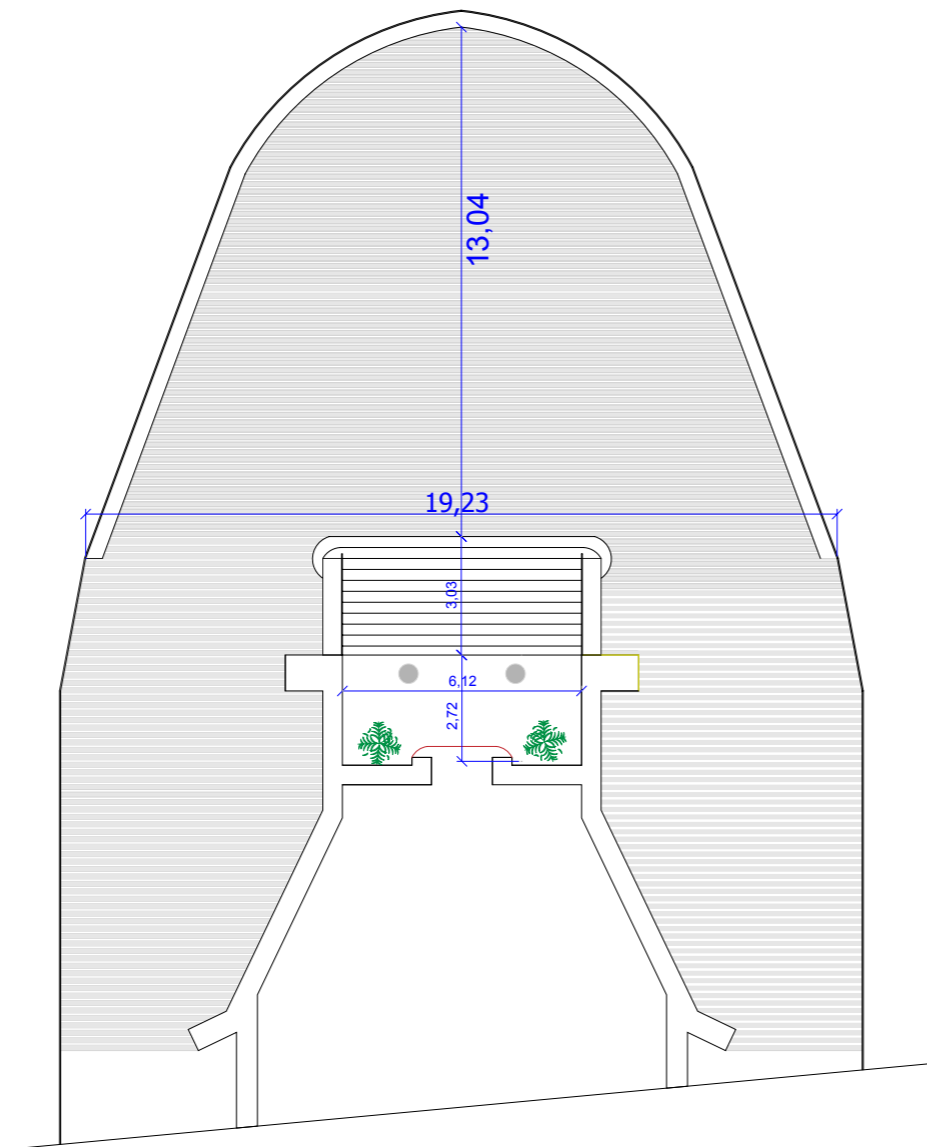
Terrace

The terrace of the observatory has:

- RAC mobile PA system with 8 outputs
- Projector + Projector screen
- Wireless microphone + Headset microphone
- Wireless LED lighting table
- 8 LED lighting focus façade

Capacity

	Surface	326,34
	Cocktail	350 pax
	Banquet	200 pax
	Meetings	-



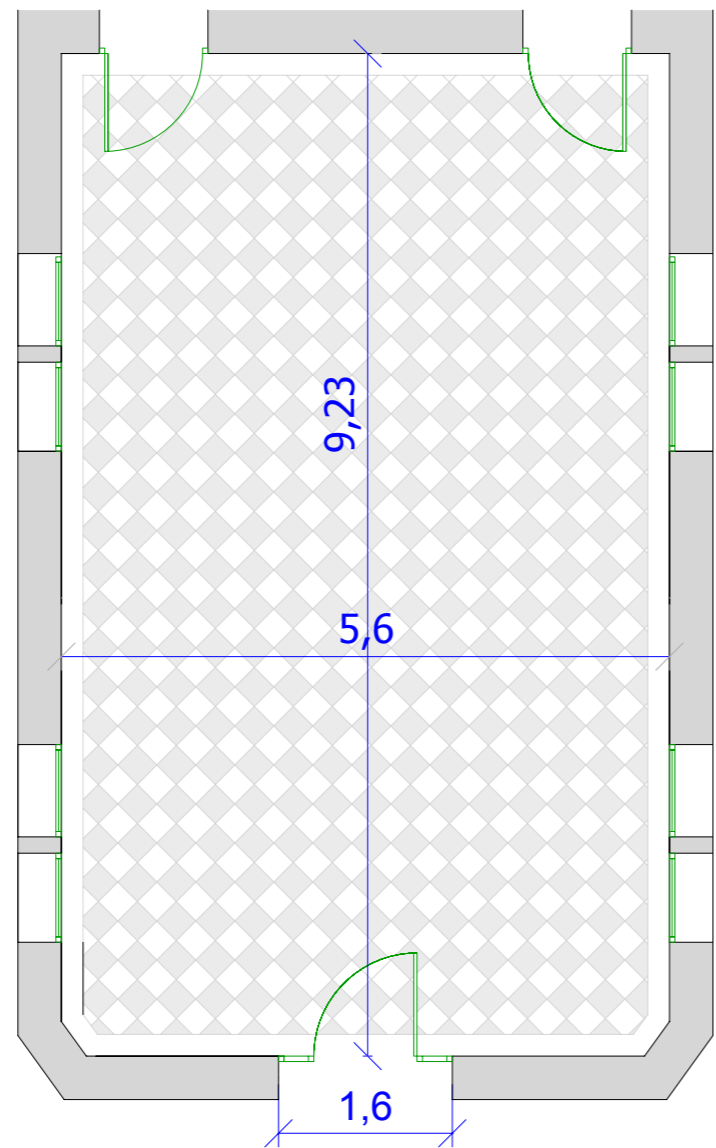
Modernist room

Modernist room features are:

- RAC mobile PA
- Speakers and wiring

Capacity

	Surface	51,61
	Cocktail	60 pax
	Banquet	55 pax
	Meetings	55 pax



Location

Camí de l'Observatori s/n, Barcelona

GPS coordinates
41.418377, 2.124768

Fabra Observatory is located on Mount Tibidabo in 1.40h from Barcelona if using public transport, and 40minuets if using private transport. It has a guarded private parking.

How to get there?



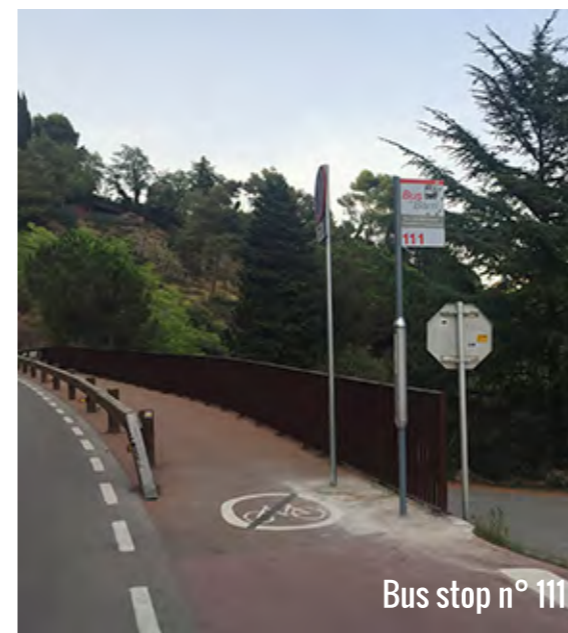
Public Transport

- 1- Take Ferrocarrils de la Generalitat line **S1** or **S2** until Peu del Funicular station.
- 2- Change to Vallvidrera's funicular until Vallvidrera Superior station
- 3- Take the neighborhood bus number 111 until Ctra. de Vallvidrera/ Camí de l'observatori station.



Private Transport

- 1- Drive through Carretera de Vallvidrera towards Tibidabo, when arriving to the roundabout continue straight until reaching the diversion to the Fabra Observatory.
- 2- Take the road to Sant Cugat and then drive through Vallvidrera road to detour to the Fabra Observatory.





Sternalia Productions S.L.
C/ Torre dels Pardals, 33, local 3
08041 Barcelona (Espanya)
Tel. 93 170 17 97
info@sternalia.com
www.sternalia.com