



EVENTS PLACES

- 1. FABRA OBSERVATORY**
- 2. REQUESENS PALACE**
- 3. ROYAL ACADEMY OF MEDICINE OF CATALONIA**
- 4. ROYAL ACADEMY OF SCIENCES AND ARTS OF BARCELONA**

1. FABRA OBSERVATORY

FABRA OBSERVATORY

Barcelona



Fabra Observatory, Barcelona

Welcome to the Fabra Observatory of Barcelona

Fabra Observatory, located in Tibidabo mountain, is a unique and emblematic space in the city, from its beginnings, it works around three areas: Astronomy, Meteorology and Seismology.

The Astronomical area is dedicated to little planets and comets astrometry within the framework of international programs.

The Meteorological area studies in detail the local climatology. The Seismic area intervenes in the world seismology, but particularly in the regional seismicity.

The Fabra Observatory belongs to the Royal Academy of Sciences and Arts of Barcelona (RACAB). Built thanks to a legacy of Mr. Camil Fabra Fontaills, first Marquis of Alella, and inaugurated by King Alfonso XIII in 1904. The building was designed by the modernist architect Josep Domènech and Estepà.

The Fabra Observatory is the fourth most antique that is still active.

The wide variety of rooms can accommodate corporate events of different nature, excellence and uniqueness as premier reference: presentations, breakfast and dinners, conferences, commercials, fashion shows, recordings, weddings, press conferences, etc.









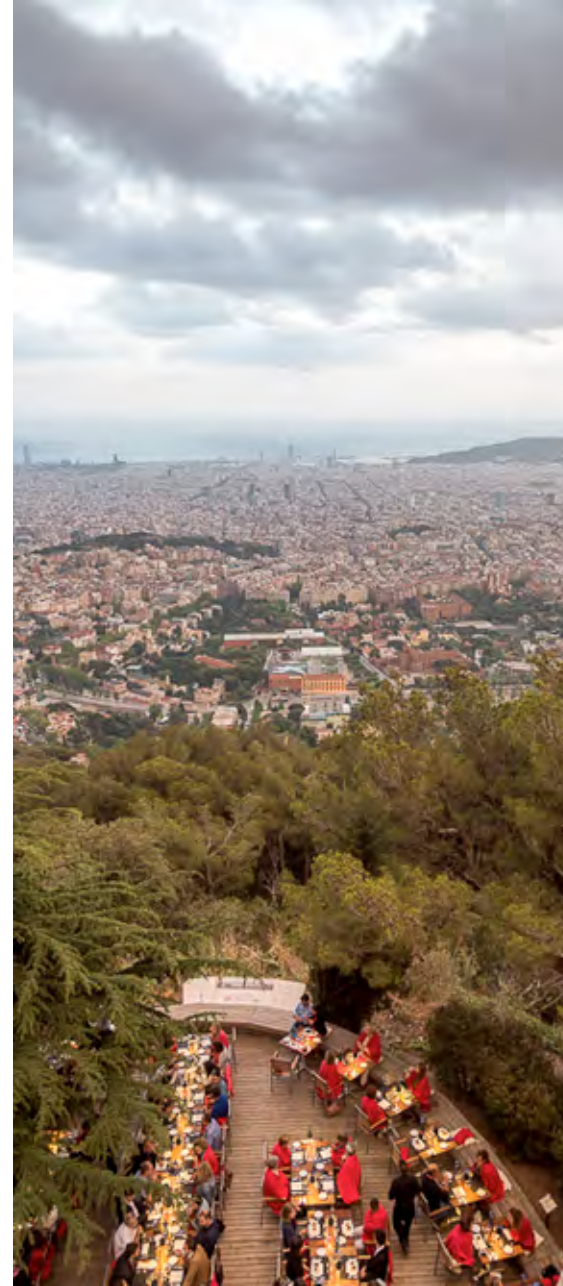
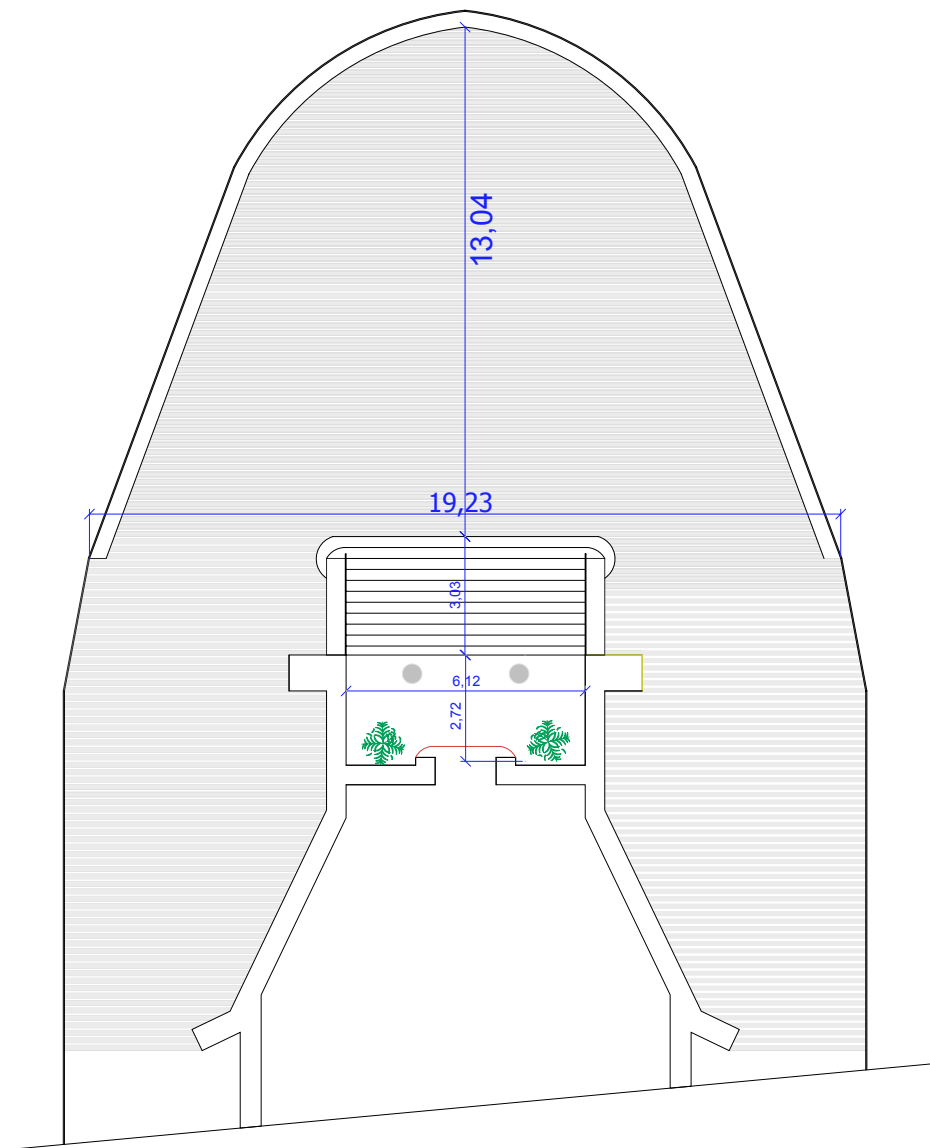
Terrace

The terrace of the observatory has:

- RAC mobile PA system with 8 outputs
- Projector + Projector screen
- Wireless microphone + Headset microphone
- Wireless LED lighting table
- 8 LED lighting focus façade

Capacity

| | | |
|--|----------|---------|
|  | Surface | 326,34 |
|  | Cocktail | 250 pax |
|  | Banquet | 180 pax |
|  | Meetings | - |



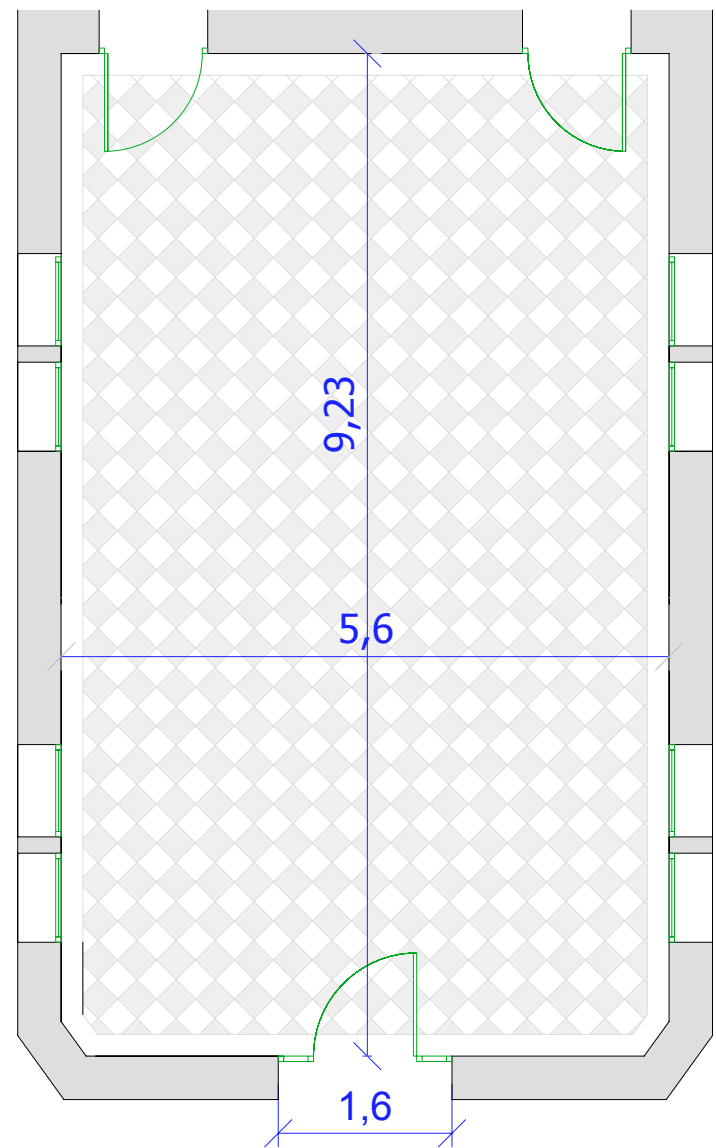
Modernist room

Modernist room features are:

- RAC mobile PA
- Speakers and wiring

Capacity

| | | |
|---|----------|--------|
|  | Surface | 51,61 |
|  | Cocktail | 60 pax |
|  | Banquet | 55 pax |
|  | Meetings | 55 pax |



Location

Camí de l'Observatori s/n, Barcelona

GPS coordinates
41.418377, 2.124768

Fabra Observatory is located on Mount Tibidabo in 1.40h from Barcelona if using public transport, and 40minuets if using private transport. It has a guarded private parking.

How to get there?



Public Transport

- 1- Take Ferrocarrils de la Generalitat line **S1** or **S2** until Peu del Funicular station.
- 2- Change to Vallvidrera's funicular until Vallvidrera Superior station
- 3- Take the neighborhood bus number 111 until Ctra. de Vallvidrera/ Camí de l'observatori station.



Private Transport

- 1- Drive through Carretera de Vallvidrera towards Tibidabo, when arriving to the roundabout continue straight until reaching the diversion to the Fabra Observatory.
- 2- Take the road to Sant Cugat and then drive through Vallvidrera road to detour to the Fabra Observatory.



Baixador
de Vallvidrera

Vallvidrera
Superior

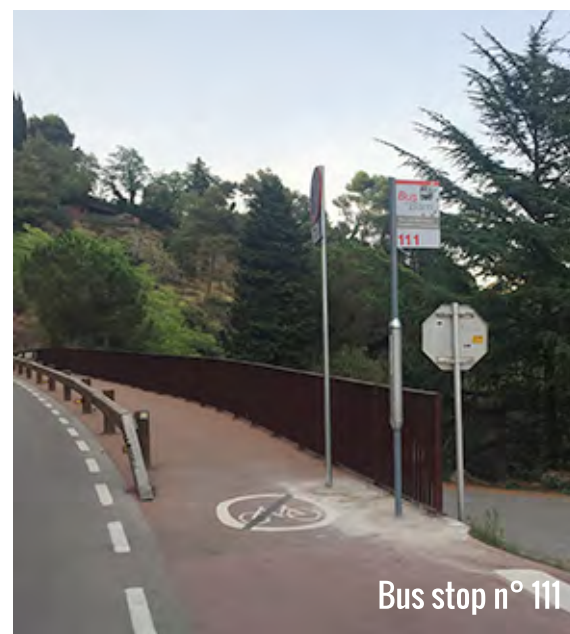
Carretera
de les
Aigües

Peu del Funicular

Vallvidrera
Inferior



Camí de l'Observatori



Bus stop n° 111



2. REQUESENS PALACE



REQUESENS PALACE

Barcelona

Welcome to the Requesens Palace

The Requesens Palace of Barcelona is listed as a Cultural Asset of National Interest. Located near the Church of St. Just, in the Gothic district, it used to be the largest residential building in the city during medieval times. It belonged to the Requesens family, one of the most important Catalan nobility.

The original construction from the 13th century was built in the wake of the Roman wall from the 3rd century, using one of the towers. The current building comes from a reform and expansion in the 15th century, when it became property of Galcerà Requesens.

From the 13th century original's construction, the Gothic structure has been preserved as well as the mullioned windows. The palace is built around a large courtyard with open staircase that leads to the main floor. The last major restoration of the completed in 1970.

Since 1917 is the headquarters of the Royal Academy of fine arts, an institution that promotes knowledge of history and literature.

The wide variety of rooms can accommodate corporate events of different nature, excellence and uniqueness as premier reference: presentations, breakfast and dinners, conferences, commercials, fashion shows, recordings, weddings, press conferences, etc.









TINELLET ROOM AND COURTYARD.

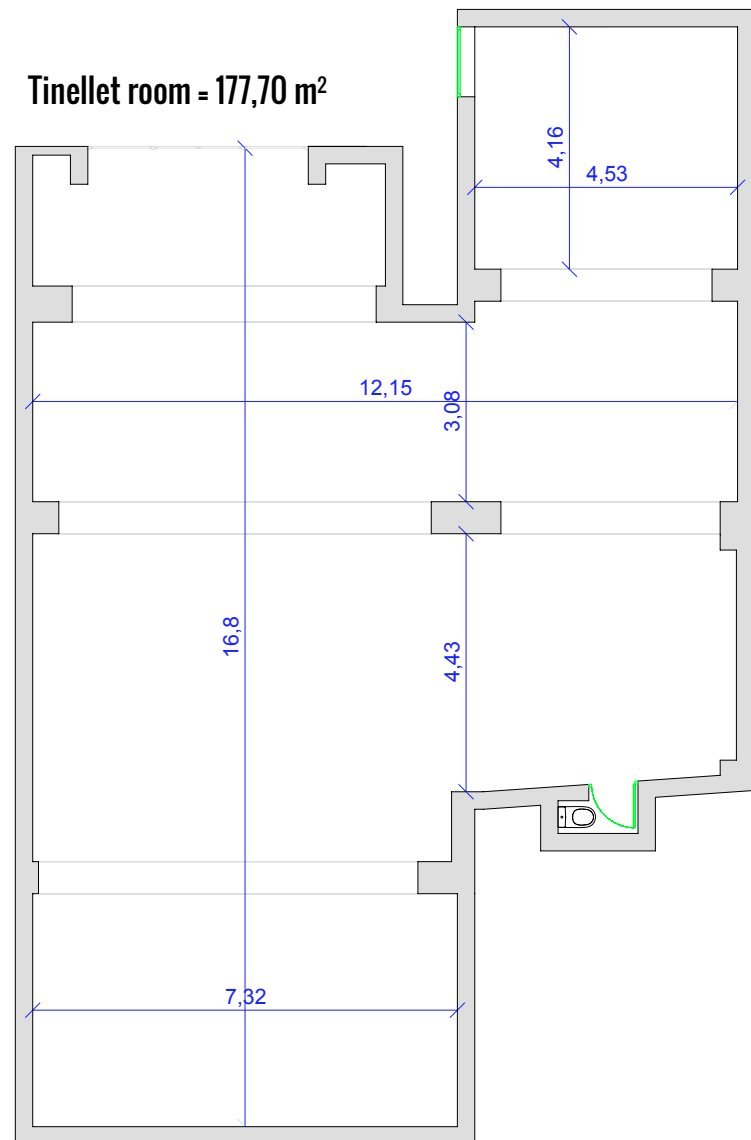
the Tinellet room and the courtyard offers.

- RAC mobile PA
- Projector + projection screen
- Wireless microphone
- Outdoor lighting in the patio
- Interior lighting in the room Tinellet

Capacity

| | | |
|---|----------|---------|
|  | Surface | 282,23 |
|  | Cocktail | 300 pax |
|  | Banquet | 180 pax |
|  | Meeting | 120 pax |

Tinellet room = 177,70 m²



TINELLET ROOM AND COURTYARD.

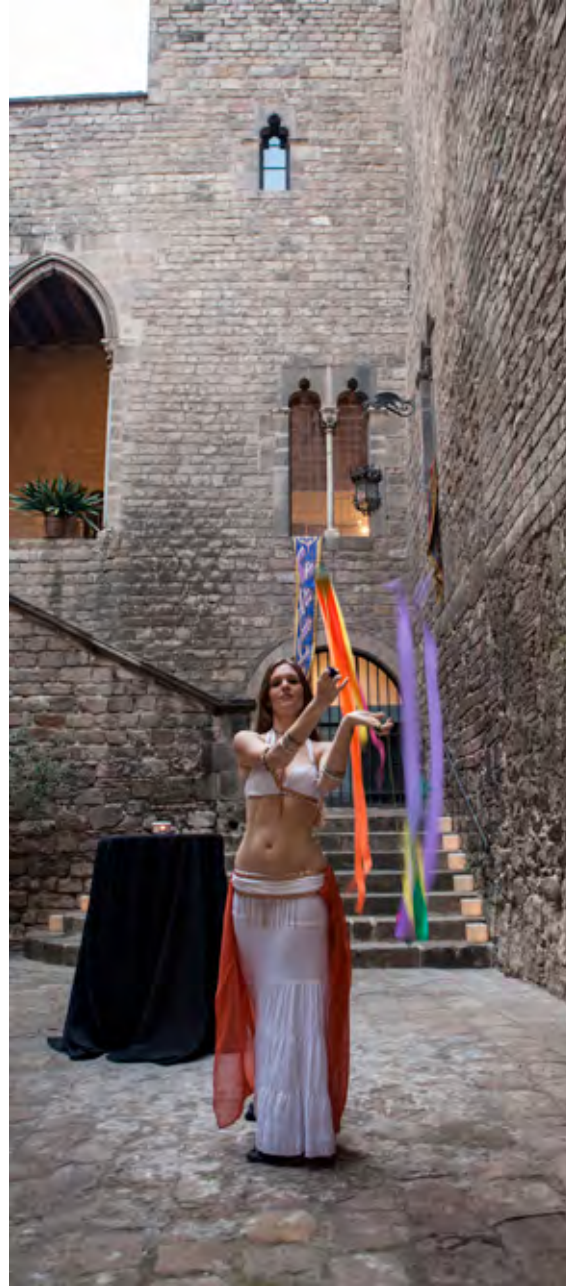
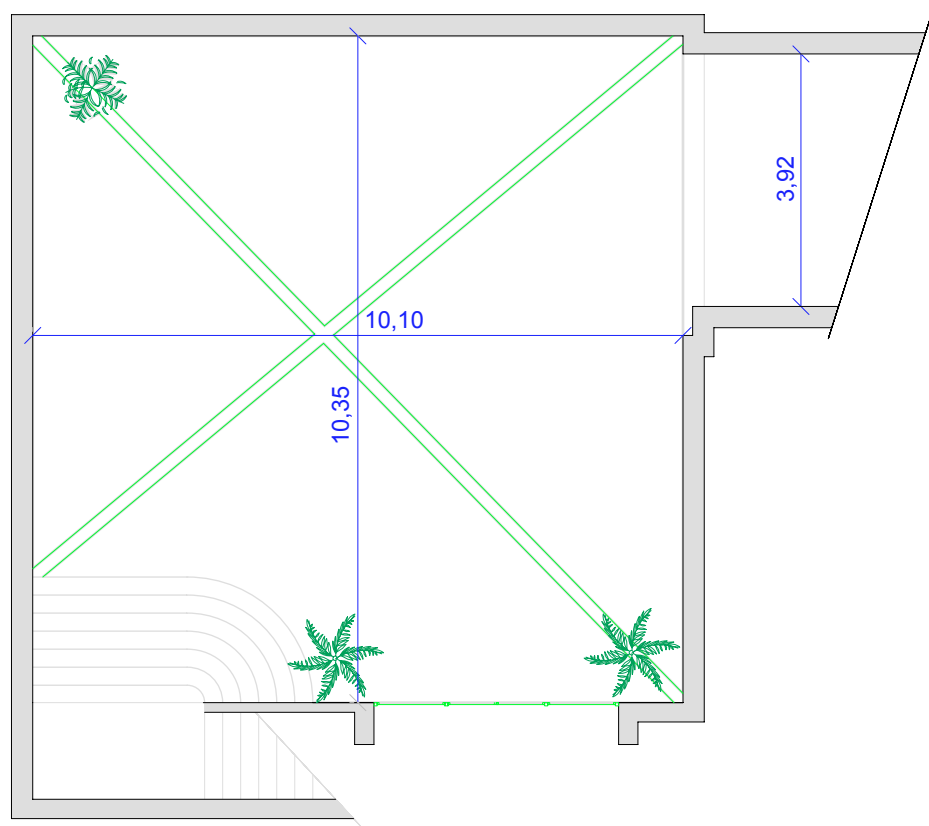
the Tinellet room and the courtyard offers.

- RAC mobile PA
- Projector + projection screen
- Wireless microphone
- Outdoor lighting in the patio
- Interior lighting in the room Tinellet

Capacity

| | | |
|---|----------|---------|
|  | Surface | 282,23 |
|  | Cocktail | 300 pax |
|  | Banquet | 180 pax |
|  | Meeting | 120 pax |

Courtyard = 104,53 m²



Auditorium

Space inside the Requesense palace for presentations, projections, conferences, etc.

- Projector + projection screen
- Wireless microphone

Capacity



Auditorium

130 pax



Location

Requesens Palace
Royal Academy of Fine Arts
c/ Bisbe Cassador, 3 (Sant Just plaza)
08002 Barcelona

GPS coordinates

41.383169, 2.178894

Located at the center of Barcelona, 5 minuts walking from
The Ramblas, and 5 minues away from the Cathedral of
Barcelona

How to get there?



Public Transport

1- Subway: **M** L3 Liceu / L4 Jaume I



2- Bus: nº 17, nº 45



Private Transport

1- From Via Laietana park in the Cathedral parking area or the St. Caterina's market parking area.
2- Looking for others parkings in the zone.



Plaza Sant Just



C/ Bisbe Cassador



**3. ROYAL ACADEMY OF MEDICINE
OF CATALONIA (RAMC)**



**ROYAL ACADEMY OF MEDICINE
OF CATALONIA (RAMC)**
Barcelona

Welcome to the Royal Academy of Medicine of Catalonia (RAMC).

Located in one of the most important neoclassical buildings of Barcelona stands the spectacular anatomical amphitheater built by Ventura Rodriguez which was used for the training of surgeons. The history of this building is linked to medicine with names like Pere Virgili, Antoni Gimbernat or Santiago Ramon y Cajal.

The wide variety of rooms can accommodate corporate events of different nature, excellence and uniqueness as premier reference: presentations, breakfast and dinners, conferences, commercials, fashion shows, recordings, weddings, press conferences, etc.







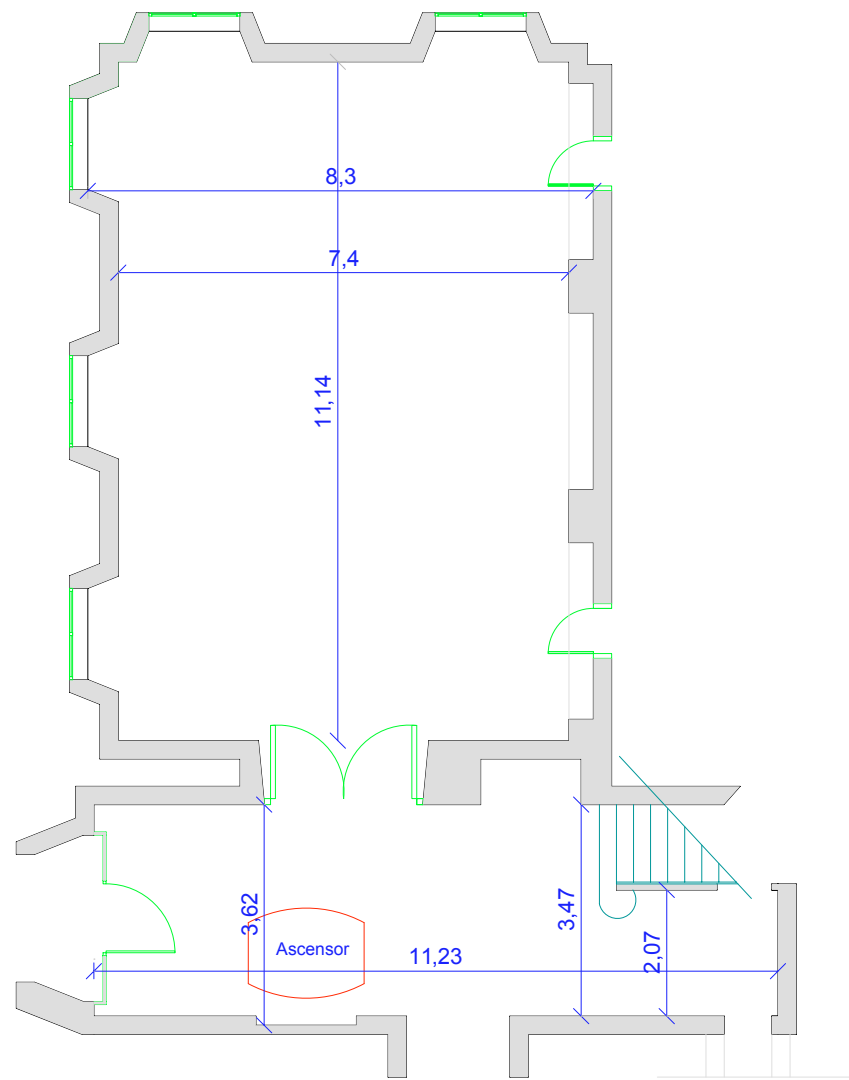
Room Turró

Located next to the hall the room has:

- RAC mobile PA,
- Projector + projection screen
- Wireless microphone
- Interior lighting.

Capacity

| | | |
|---|----------|---------|
|  | Surface | 129,94 |
|  | Cocktail | 150 pax |
|  | Banquet | 100 pax |
|  | Meetings | 100 pax |



Sala Gimbernat

located inside the RAMC for presentations, projections, conferences,...

It has:

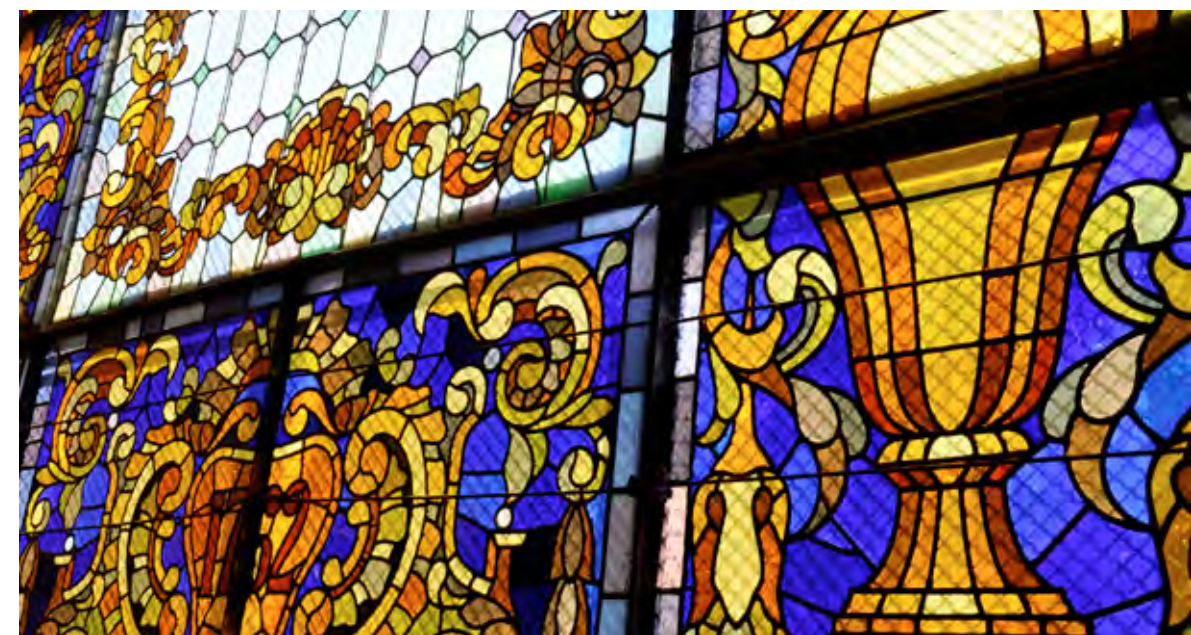
- Projector + projection screen
- Wireless microphone
- Interior lighting

Capacity



Amphitheater

180 pax



Location

Royal Academy of Medicine of Catalonia (Ramc)
c/ Carme no47
08001 Barcelona

GPS coordinates
41.381541, 2.170063

The RAMC is located in the Raval neighborhood, the center of Barcelona, and it takes 5 minutes walking from the Liceu (L3) station.

How to get there?



Public transport

- 1- Subway:   Liceu
- 2- Bus: nº 91, nº 59



Private transporte

- 1- Walk down through the Rambles and park in Boqueria Parking area.
- 2- Try to park to the others parkins in zone.



**4. THE ROYAL ACADEMY OF SCIENCES
AND ARTS OF BARCELONA**



**THE ROYAL ACADEMY OF SCIENCES
AND ARTS OF BARCELONA**

Welcome to the Royal Academy of Sciences and Arts of Barcelona (RACAB)

This institution, with more than 250 years, is located in an eighteenth century building, in the city centre. In its conference room, Albert Einstein exposed the relativity basis. In the adjacent room there rest a Billeter astronomical clock dated in 1869 which indicates the time and also the exact position of some planets, the Earth, the Moon and the Sun until 2029. This is a building where the passion for architecture and the devotion to science are amazingly represented.

The wide variety of rooms can accommodate corporate events of different nature, excellence and uniqueness as premier reference: presentations, breakfast and dinners, conferences, commercials, fashion shows, recordings, weddings, press conferences, etc.





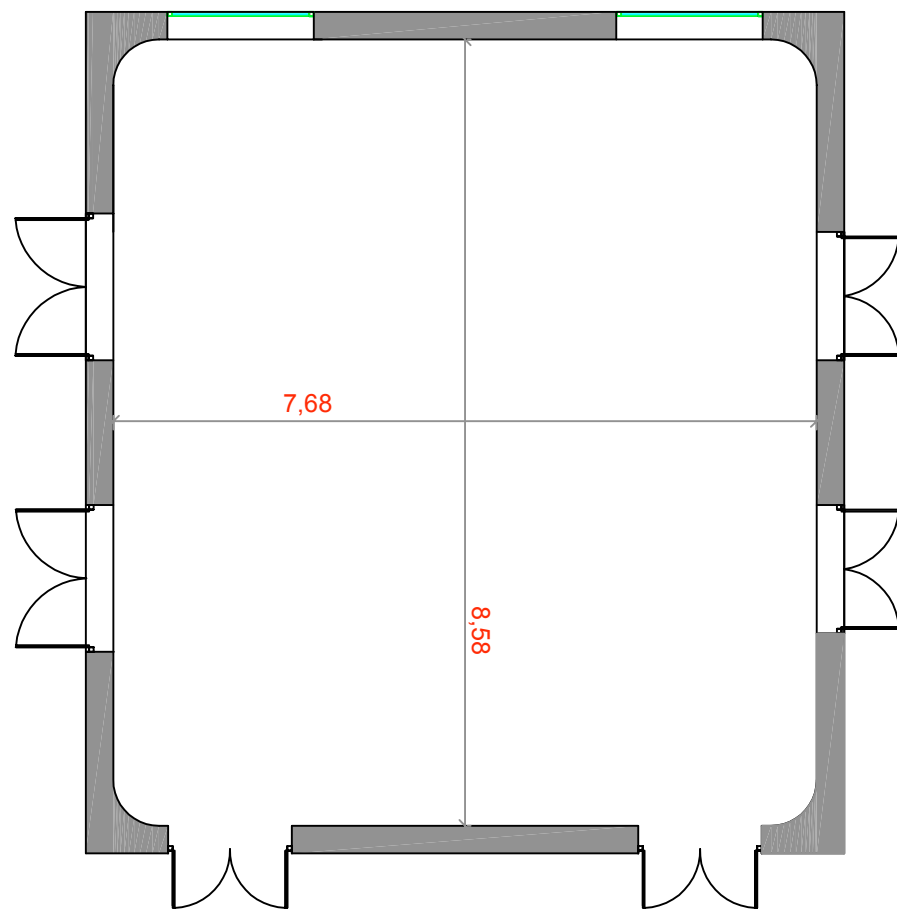
Assembly Hall

The RACAB Assembly Hall has:

- Rac loudspeaker with 2 loudspeakers in the auditorium + 2 speakers in the clock room + 2 speakers in the Instrument room.
- Projector with screen and tracking screen
- 3 desk microphones
- 2 clip microphones
- 1 wireless microphone

Capacity

| | | |
|--|------------|--------|
|  | Surface | 65,89 |
|  | Cocktail | - |
|  | Banquet | - |
|  | Meetings | 32 pax |
|  | Auditorium | 70 pax |



Clocks room + Instruments room

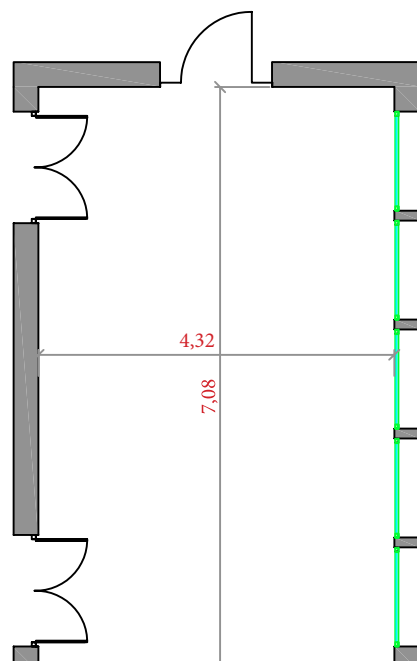
The rooms have:

- 2 speakers to the clock room
- 2 speakers to the instrument room

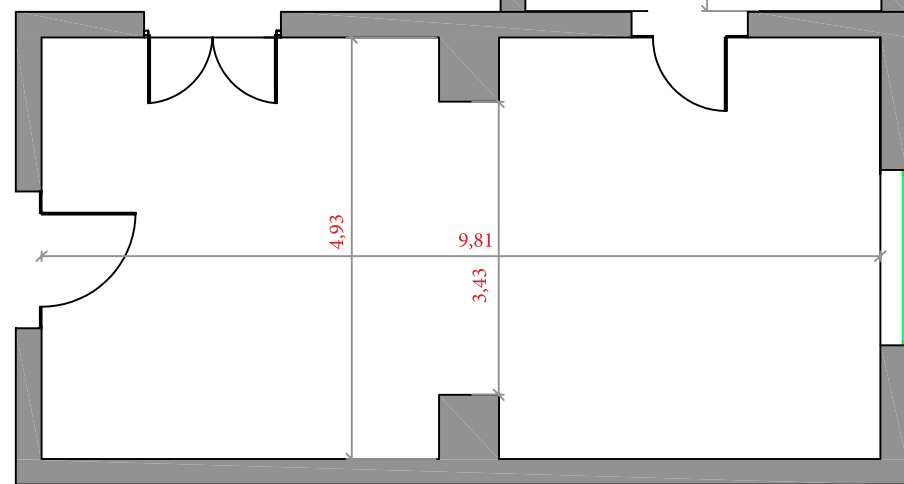
Capacity

| | |
|---|--------|
|  Surface | 77,92 |
|  Cocktail | 60 pax |
|  Banquet | - |
|  Meetings | 20 pax |
|  Auditorium | - |

Clocks room = 30,58 m²



Instruments room = 47,34 m²



Location

La Rambla, 115 - 08002 Barcelona

GPS coordinates

41.384134 | 2.170591

The RACAB is located in the center of Barcelona
2 minutes walk from Plaza Catalunya.

How to get there?



Public transport

- 1- Metro: Lines **L1**, **L3**. Stop at Plaça Catalunya
- 2- Ferrocarrils de la Generalitat: **L6**, **S1**, **S55**, **S5**, **S2** and **L7** until the stop Plaça Catalunya
- 3- Renfe Rodalies de Catalunya: **R7**, **R4**, **R1** and **R3**
- 4- Bus: N1, N2, N3, N4, N6, N7, N8, N9, N11, N12, N13, N14, N15

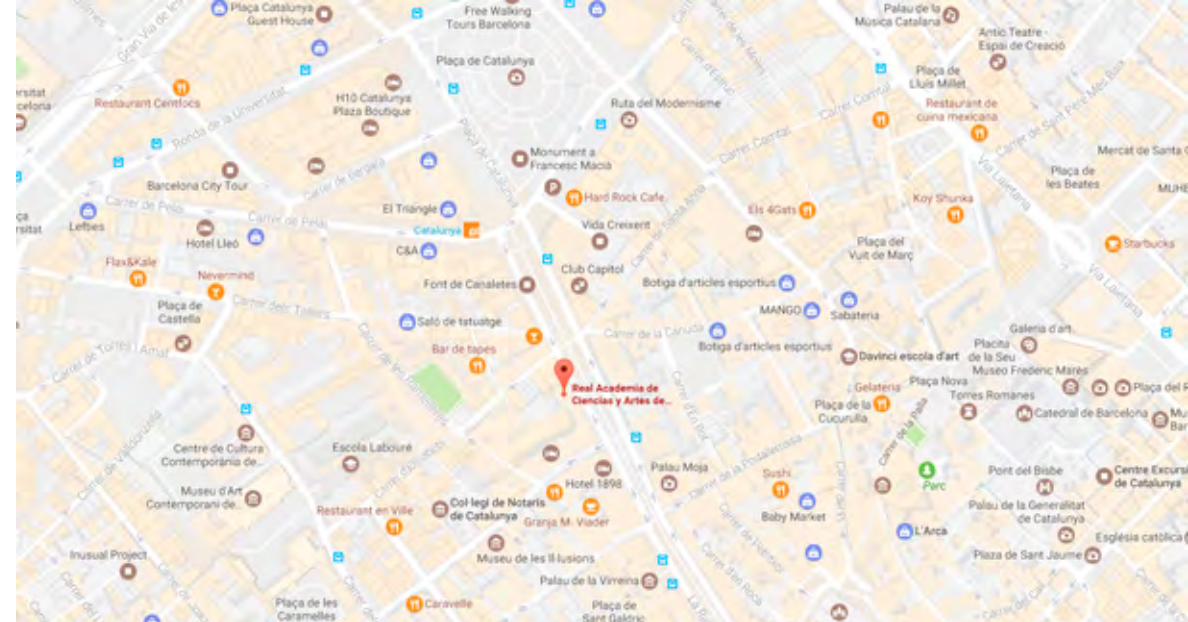


Private transport

- 1- By car towards Plaza Catalunya. Parking in public or private parking.
- 2- By motorcycle towards Plaza Catalunya. Parking in public or private parking.



Entrada a la RACAB



Fachada edificio RACAB





Passeig Taulat 177, Baixos
08005 Barcelona
Tel. 93 170 17 97
info@sternalia.com
www.sternalia.com